

# Griffon Forest Price List 2010



## 2010 Weekly & Short Break Prices

	Gardeners & Poachers Sleeps 2		Poachers Premier Sleeps 2 		Keepers Sleeps 4		Gardeners Premier Sleeps 2/4 		Woodmans Sleeps 5	
	Week	S/B	Week	S/B	Week	S/B	Week	S/B	Week	S/B
Jan 4 - Feb 13	£498	£329	£602	£397	£482	£318	£635	£419	£499	£329
Feb 13 - Feb 20	£648	£447	£738	£510	£616	£425	£823	£568	£683	£451
Feb 20 - Apr 3	£599	£396	£719	£474	£563	£372	£756	£499	£599	£396
Easter (Fri - Mon)	****	£528	****	£592	****	£539	****	£661	****	£587
Apr 3 - Apr 10	£755	****	£846	****	£770	****	£944	****	£863	****
Easter (Mon - Fri)	****	£498	****	£558	****	£508	****	£623	****	£553
Apr 10 - Apr 17	£717	£472	£829	£547	£708	£467	£895	£591	£734	£514
Apr 17 - May 1	£699	£461	£829	£547	£686	£453	£887	£585	£713	£471
May 1 - May 8	£699	£489	£829	£587	£686	£493	£887	£625	£713	£511
May 8 - May 29	£699	£461	£829	£547	£686	£453	£887	£585	£713	£471
May 29 - Jun 5	£834	£584	£951	£666	£898	£630	£1028	£720	£974	£643
Jun 5 - Jul 3	£765	£505	£882	£582	£721	£475	£947	£624	£822	£542
Jul 3 - Jul 24	£779	£514	£882	£582	£742	£490	£965	£637	£830	£548
Jul 24 - Aug 28	£851	£596	£953	£666	£971	£680	£1079	£756	£1090	£764
Aug 28 - Sep 4	£744	£531	£843	£596	£750	£535	£930	£654	£778	£553
Sep 4 - Sep 25	£744	£491	£843	£556	£750	£495	£930	£614	£778	£513
Sep 25 - Oct 23	£744	£491	£843	£556	£628	£415	£930	£614	£633	£418
Oct 23 - Oct 30	£718	£474	£817	£539	£715	£473	£908	£599	£783	£516
Oct 30 - Dec 19	£538	£355	£635	£419	£559	£369	£674	£445	£586	£387
Xmas & NY (Wed-Wed)	£748	****	£862	****	£776	****	£972	****	£879	****

### Midweek Savers

Discounts available on selected midweek bookings.

### Early Booking Savers

Offers available until 28th Feb 2010 on holidays starting after 3rd April 2010.

Contact us for details.

### Book 2011 at 2010 prices.

Where dates of bank holiday & school weeks change from year to year, the respective 2010 price will apply.



### Fortnight Favourite

Book two or more consecutive weeks and **SAVE** £50 off the second and additional weeks, taken any time of year.



### Two's Up - SAVE £30 a week or

£15 a short break off your booking for two people only, staying in a Keepers Lodge at any time of year.

### Short Breaks and Last Minute Breaks

Short Breaks available all year (Fri-Mon Mon-Fri):  
Last Minute breaks available any day start

Visit [www.griffonforest.co.uk](http://www.griffonforest.co.uk) for details of all our special offers and last minute deals.

## Your Accommodation:

- All lodges include an outdoor Hot Tub
- Wide screen TV with satellite and free view channels. DVD/CD player
- Kitchen including microwave and dishwasher
- Utility room (except Poachers) and washer/dryer
- Beds made up for your arrival
- Bath and shower
- Bed linen, duvets and towels
- Central heating
- Gas and electricity included
- Timber deck with sun loungers, garden furniture and brick built BBQ.
- Welcome pack – Tea, coffee, milk, biscuits, fresh flowers
- All lodges are non-smoking

## Additional Features

- Travel cots and highchairs £10pw
- Pets £35pw each (max 2) (in specific lodges) Day kennels available.
- Network of walks and trails
- Cycle hire
- Shop/Off Licence and Internet facility
- Trout fishing lake (fly only)
- Lit pathway to Tykes bar and restaurant (10% discount card for all guests).
- Sandburn Hall 18 hole golf course, driving range and Sports Bar.
- Indoor tennis and badminton



### The Forest's Finest...

Luxury hideaways... Poachers Premier and Gardeners Premier.



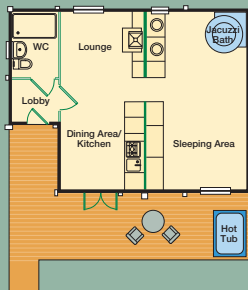
## Gardeners Lodge

Sleeps 2

This luxury one bedroom lodge gives you all the comfort and space you need for a relaxing break. It features a king-size four poster bed, spa bath and a large timber deck with sunken outdoor hot tub.



Complimentary wine and chocolates on arrival.



## Poachers Lodge

Sleeps 2

Fresh look for 2010, includes new TV's and luxurious leather sofas. Perfect for that romantic break. This open plan Lodge has a king-size four poster, bathing area with 6ft circular Jacuzzi bath, separate spacious shower room, kitchen/diner and cosy lounge area. Large timber deck with sunken outdoor hot tub.



Complimentary wine and chocolates on arrival.



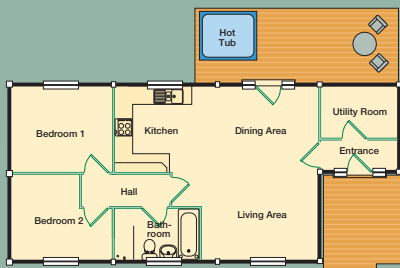
## Poachers Premier Lodge

Sleeps 2

The forest's finest! Beautifully designed open plan lodge, perfect for a romantic break or honeymoon. King-size four poster bed and a superb bathing area with 6ft circular Jacuzzi bath and spacious walk in shower. New soft furnishings, cosy leather couches. Large timber deck with sunken outdoor hot tub.



Complimentary Champagne, chocolates and red roses on arrival.



## Keepers Lodge

Sleeps 4

Popular luxury two-bedroom lodge. One double with traditional oak canopy bed and one twin. Bathroom with separate walk in shower. Large timber deck with sunken outdoor hot tub.



**Two's Up - SAVE** £30 a week or £15 a short break off your booking for two people only, staying in a Keepers Lodge at any time of year.



## Gardeners Premier Lodge

Sleeps 2 or 4

The forest's largest lodge! Designed especially for one or two couples. Each bedroom has king-size four poster bed, ensuite with walk in shower and Jacuzzi spa bath. Luxuriously furnished central living, dining and kitchen area leading onto large timber deck with sunken outdoor hot tub.

Book the lodge for one couple with one bedroom only and pay the lower Poachers Premier rates.



Complimentary wine and chocolates for both couples on arrival.



## Woodmans Lodge

Sleeps 5

Very spacious luxury lodge. Ideal for families. One double with traditional oak canopy bed and en-suite shower, one twin room (linked beds) and one single room. Family bathroom. Large timber deck with sunken outdoor hot tub.

Visit [www.griffonforest.co.uk](http://www.griffonforest.co.uk) for details of all our special offers and last minute deals.

